

DWB Series**Dry Wall Bead Access Doors**

Doors are designed for flush installation in dry wall surfaces. Door features a concealed hinge that prevents distortion and closes door squarely.

Door and Frame are fabricated from 16 gage, galvanized steel with a prime coat finish.

Frame has 1/4" mounting holes positioned to allow anchoring directly to studs to assure a secure mounting. A drywall bead on the frame allows the drywall joint compound to be applied over the bead at the same time as the joints and corners.

Flange has prepunched holes to provide grip for the joint compound and facilitate fastening the flange to framing members with drywall screws.

Concealed Pivoting Rod Hinge prevents distortion and closes door squarely. Doors 24" or larger are provided with a continuous piano hinge.

Latch is screwdriver operated.

Finish is a prime coat suitable for painting.

Guide Specification

Provide Elmdor® DWB Series, Dry Wall Bead Access Doors (specify model number and options.) Access door and frame shall be fabricated from 16 gage, galvanized steel with a prime coat finish. Frame shall have mounting holes positioned to allow anchoring directly to the studs, assuring a secure mounting. Hinge shall be concealed pivoting rod type. Latch shall be screwdriver operated. Finish shall be prime coat suitable for painting.



Member of U.S. Green
Building Council

DWB

Revised: 3/24/09

Recyclable
Product



MODEL NUMBER AND OPTIONS SELECTION

BASE MODEL NUMBER

☐ DWB Dry Wall Bead Access Door

Suffix Options

☐ -AKL Allen Key Latch
☐ -CL Cylinder Lock (one per door)
☐ -SS Stainless Steel Construction.
(Type 304 No 4 Finish Satin Finish)

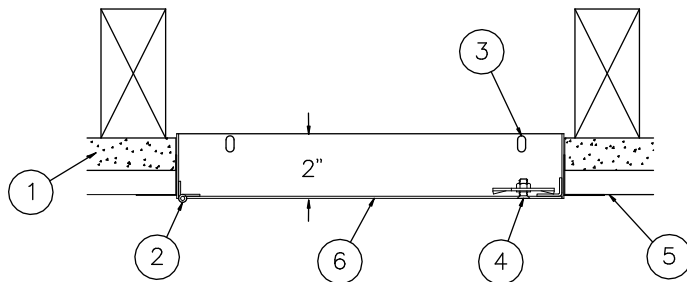
STANDARD AVAILABLE SIZES

Special sizes available upon request.

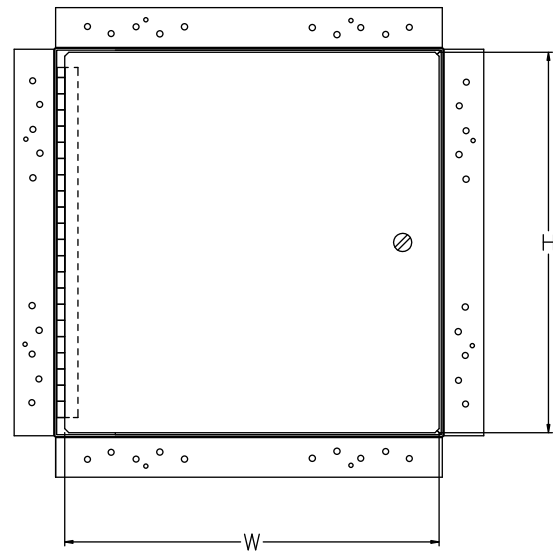
NOMINAL DOOR SIZE (W X H)	WALL OPENING (minimum required)	LATCHES	WEIGHT
DWB 8" x 8"	8-1/4" x 8-1/4"	1	3.5 lbs.
DWB 10" x 10"	10-1/4" x 10-1/4"	1	4.5 lbs.
DWB 12" x 12"	12-1/4" x 12-1/4"	1	6 lbs.
DWB 14" x 14"	14-1/4" x 14-1/4"	1	7 lbs.
DWB 16" x 16"	16-1/4" x 16-1/4"	1	8 lbs.
DWB 18" x 18"	18-1/4" x 18-1/4"	3	11 lbs.
DWB 22" x 22"	22-1/4" x 22-1/4"	3	15 lbs.
DWB 24" x 24"	24-1/4" x 24-1/4"	3	16 lbs.
DWB 24" x 36"	24-1/4" x 36-1/4"	6	25 lbs.
DWB 30" x 30"	30-1/4" x 30-1/4"	7	24 lbs.
DWB 36" x 36"	36-1/4" x 36-1/4"	8	33 lbs.

NOTES:

1. DRYWALL
2. CONCEALED PIVOTING ROD HINGE
3. MOUNTING HOLES
4. SCREWDRIVER OPERATED LATCH
5. DRYWALL JOINT COMPOUND
6. DOOR



SIDE VIEW



FRONT VIEW

Dimensions are subject to manufacturer's tolerance of plus or minus 1/4". Elmdor/Stoneman assumes no responsibility for use of void or suspended data. Please visit www.elmdorstoneman.com for most current specifications. © Copyright 2009 Elmdor/Stoneman, City of Industry, CA, A Division of Acorn Engineering Company.

SELECTION SUMMARY & APPROVAL FOR MANUFACTURING

Model Number & Options _____ Quantity _____
Company _____ Date _____
Contact _____ Title _____
Approval for Manufacturing/Signature _____

DWB

Revised: 3/24/09